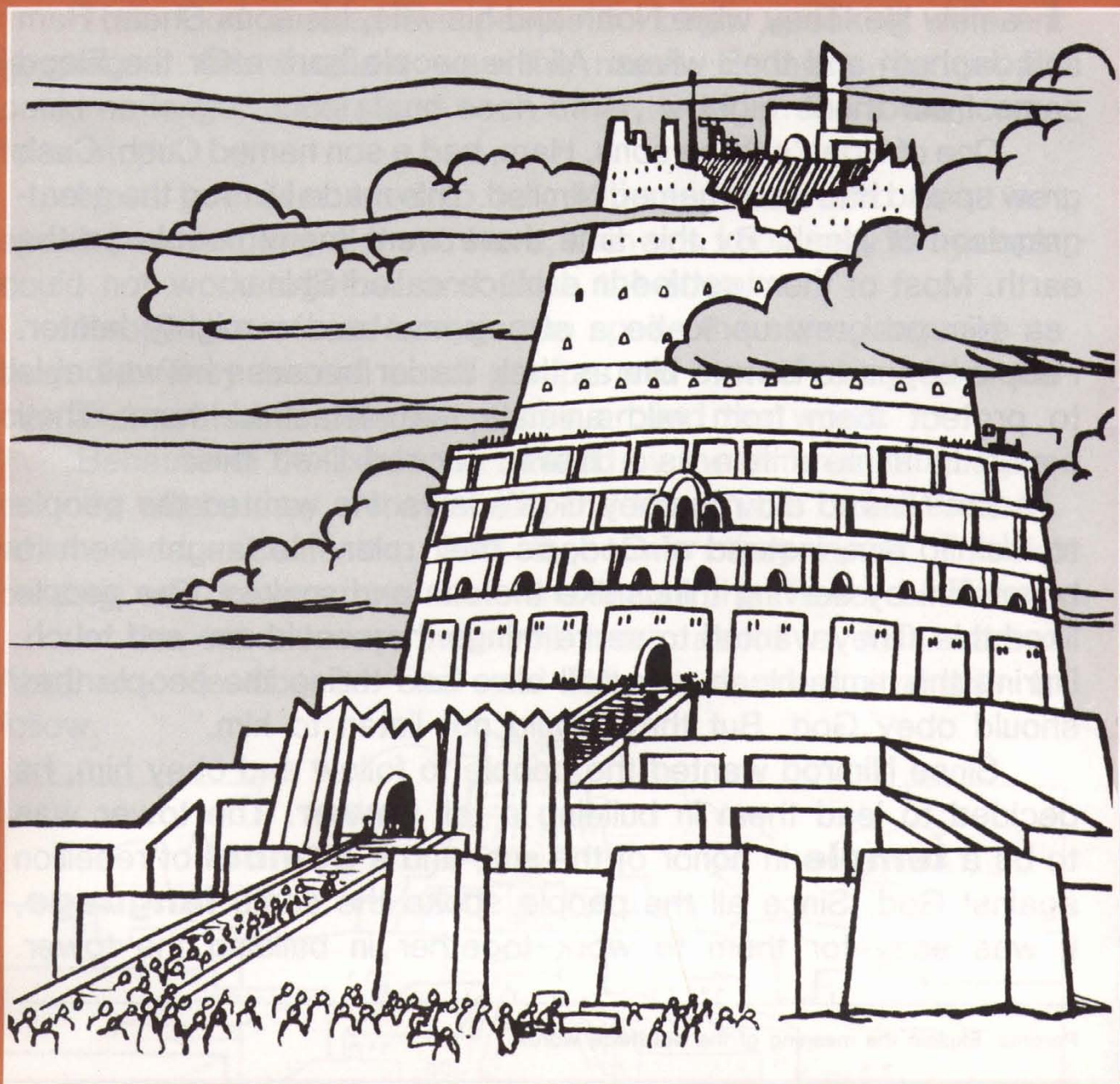


YOUTH BIBLE LESSONS

LEVEL K

LESSON 5



Nimrod and the Tower of Babel

NIMROD AND THE TOWER OF BABEL

The last lesson ended with eight people leaving the ark to start a new life. They were Noah and his wife, his sons Shem, Ham and Japheth and their wives. All the people born after the Flood came from these eight.

One of Noah's three sons, Ham, had a son named Cush. Cush grew up and had a son named Nimrod. This made Nimrod the great-grandson of Noah. By this time there were many people on the earth. Most of them settled in a place called Shinar.

Nimrod grew up to be a strong man and a mighty hunter. People began to look to him as their leader because he was able to protect them from wild animals that attacked them. They began to think of him as a **hero**. Nimrod liked this.

But Nimrod did not obey God's laws. He wanted the people to look to him, instead of God, as their ruler. He taught them to honor him by serving things like the sun and snakes. The people liked this. They wanted to serve things they could see and touch. During this time, Noah was still alive and telling the people they should obey God. But they would not listen to him.

Since Nimrod wanted the people to follow and obey him, he decided to lead them in building a tall **tower**. The tower was to be a **temple** in honor of the sun, and a **symbol** of rebellion against God. Since all the people spoke the same **language**, it was easy for them to work together in building the tower.

Parents: Explain the meaning of the **boldface** words.

The people worked very hard. The tower began to take shape. It became the most important thing in their lives.

God saw what Nimrod and the people were doing. He was not pleased. He had wanted them to spread out after the Flood and live in different parts of the world. He also wanted them to obey his laws. God knew that if the people were allowed to follow Nimrod in building the tower, they would soon be just as evil and wicked as people were before the Flood.

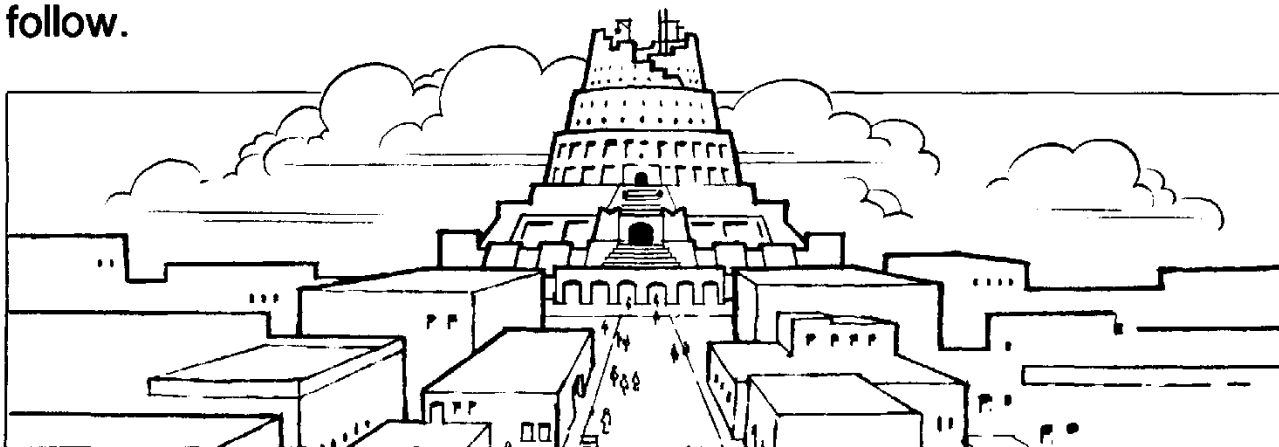
Then God caused the people to begin speaking different languages. **Confusion** was the result. Because the people could no longer understand each other, work on the tower came to a stop.

Have you ever tried to talk with someone who does not speak your language? If you have, then you know why the people could not work together and finish the tower.

People soon found others who spoke the same language as they did. They formed small groups and moved away from the city and settled in different places around the world.

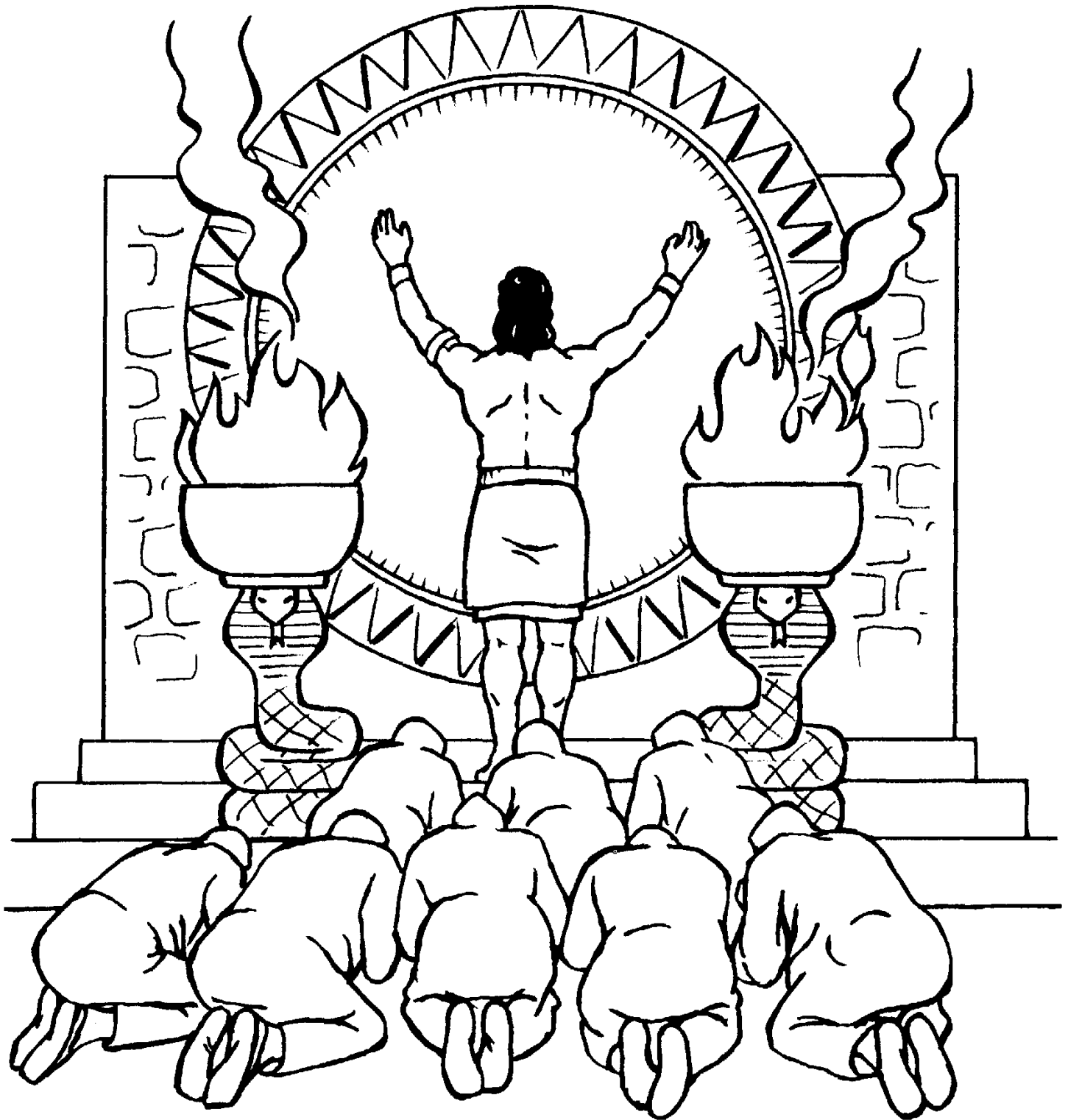
Because of the confusion caused by the different languages, the city where they were building the tower was called **Babel**, which means confusion. And the tower they never finished building was known from that time on as the Tower of Babel.

In the next lesson we will learn about a man named Abraham. He obeyed God and left us a great example to follow.

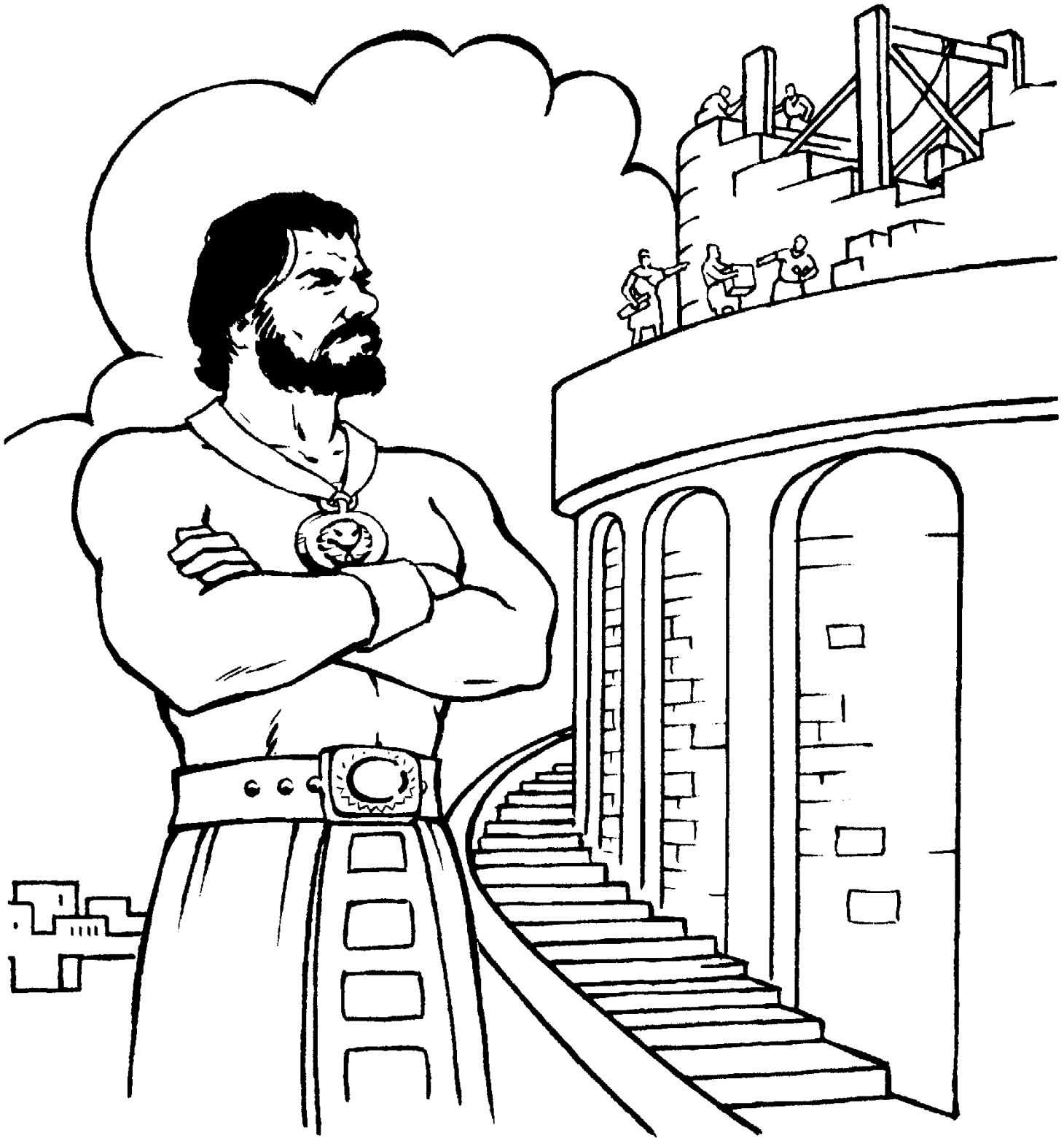




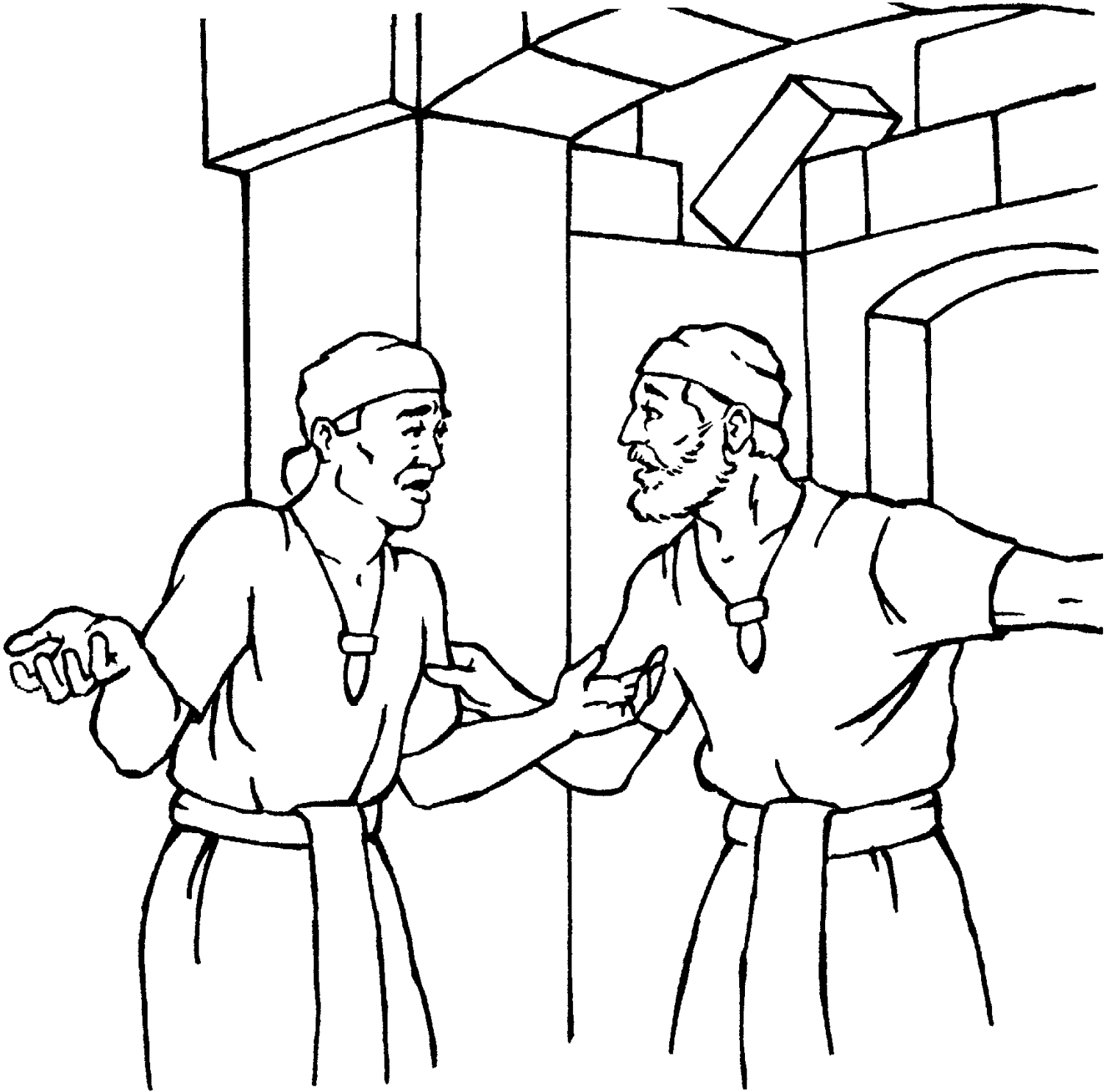
Nimrod was a strong man and a mighty hunter. He protected the people from wild animals.



Nimrod taught the people
to serve the sun and idols
in place of God.



Nimrod led the people to build a tower, which was a symbol of their rebellion against God.



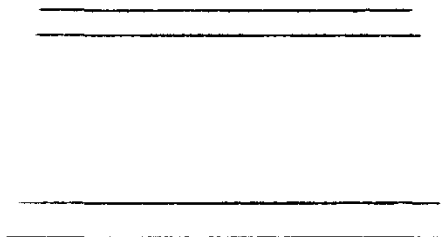
God confused the people's language. This stopped work on the tower.



The people began to leave the city and settle in different places around the world.

19 ●

● 18



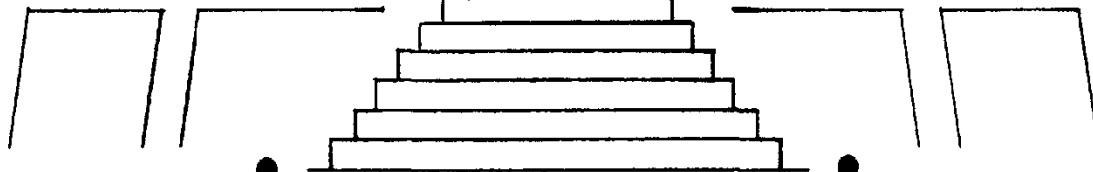
21 ● ● 20 ————— ● ● 16
17

23 ● ● 22 ● 6 ● 7 ● 15 ● 14



4 ● 24 ● 5 ● 1 ● 9 ● 8 ● 13 ● 12 ●

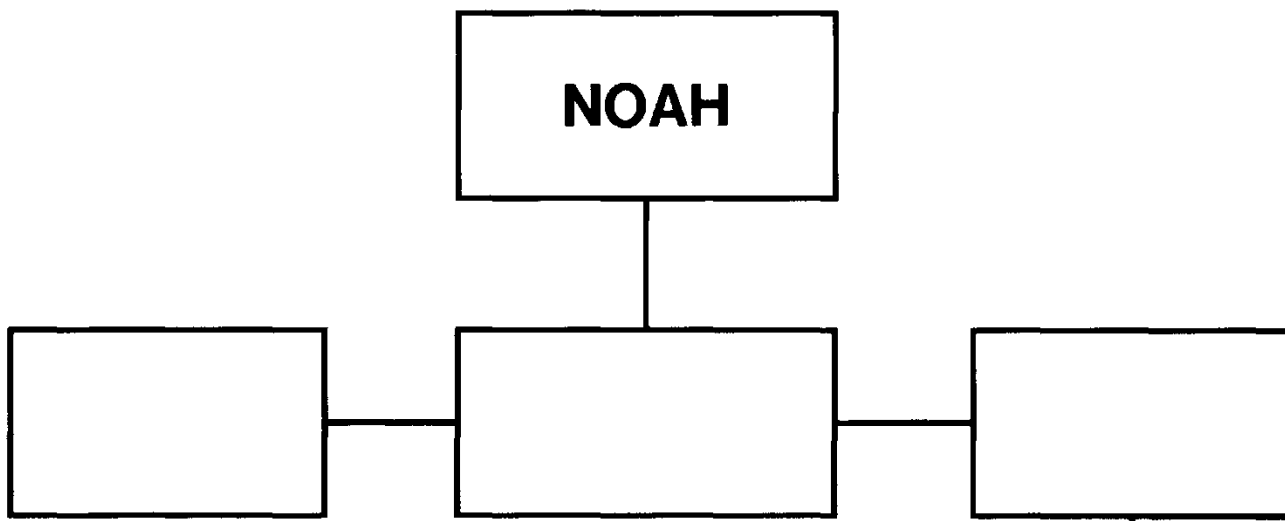
3 ● 2 ● 10 ● 11 ●



Connect the dots.
See what the people of Babel
started, but never finished.



Connect the dots. Nimrod protected the people from this animal.



Fill in the family tree
with these names:

SHEM

HAM

NIMROD

CUSH

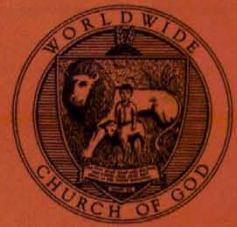
JAPHETH

Parents: Help your child write the names of Noah's three sons, Nimrod and his father in the boxes of the family tree. Point out that Nimrod is the great-grandson of Noah.

FOUNDER: HERBERT W. ARMSTRONG (1892-1986)

PASTOR GENERAL: JOSEPH W. TKACH

Published by the Worldwide Church of God and
produced in cooperation with Imperial Schools.
Copyright © 1983. All rights reserved.



BIBLE MEMORY

Zephaniah 3:9

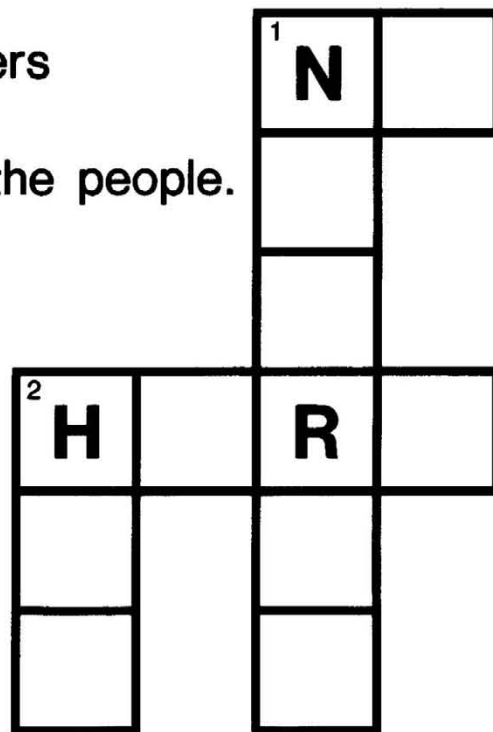
CROSSWORD PUZZLE

ACROSS

1. Did Nimrod and his followers obey God? ____.
2. Nimrod was a _____ to the people.

DOWN

1. _____ built a tower.
2. ____ was one of Noah's three sons.



WORDS

Nimrod

Ham

Hero

No

Parents: To complete this crossword puzzle, read the questions or statements to your child. Point out the answers under "WORDS." Also point out the already existing letters in the puzzle. Then have your child write the correct letters in the boxes.